

POWERSCREEN® PHOENIX 1600

TRACKED TROMMEL SCREEN



TECHNICAL SPECIFICATION - REV 0.1 17/10/2019





PHOENIX 1600 TRACKED



OVERVIEW

SPECIFICATION

Total Weight	21,100kg (46,500lbs) - depending on options		
Transport	Length	16.1m (52' 10")	
	Height	4.1m (13' 6")	
	Width	2.6m (9' 2")	
Working	Length	24.8m - 26.3m (81' 4" - 86' 3") - depending on conveyor angle	
	Width	15m - 16.8m (49' 3" - 55' 1") - depending on conveyor angle	
	Feed Height	2.7m (8' 10")	

Innovatively designed to provide excellent fuel efficiency and low operating costs.

The Powerscreen Phoenix 1600 has been innovatively designed to provide excellent fuel efficiency and low operating costs, whilst also reducing emissions and noise levels due to the machine running at a low engine RPM. With a 4.9m (16') x 1.54m (5') drum, unrivalled production throughput is guaranteed due to the screening area, the largest in its class. Highly versatile the Phoenix 1600 can easily screen a variety of material including topsoil, compost, sand and gravel, wood chip and C&D waste. Woven mesh or heavy duty punch plate panels can be fitted to the drum ensuring all application requirements are met.

The 180° swivel fines conveyor, with a discharge height of 5.9m (19'4") results in the creation of impressive stockpiles. This swivel feature can

be controlled via a remote while the machine is in operation, minimising downtime. The powerful four wheel drive system with high performance friction grip wheels is used to turn the trommel drum giving operators the ability to run bi-directionally.

Powered by a Caterpillar C4.4 engine (Tier 4 Final or Constant Speed) the powerful hydraulics and intelligent feed control system ensure the Phoenix 1600 is always working at its optimum. The low engine RPM coupled with the fuel save (stand-by) mode guarantees peak efficiency.



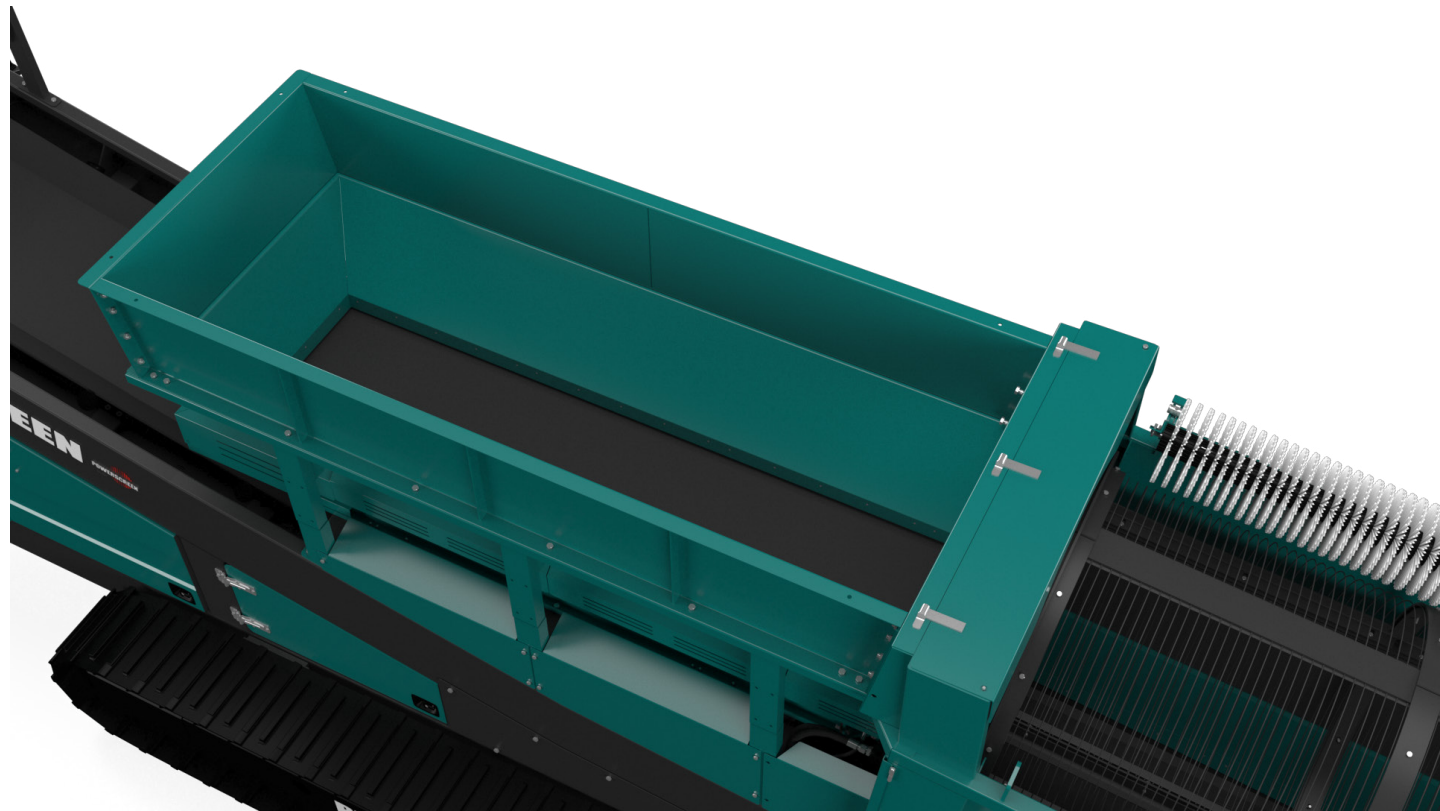


PHOENIX 1600 TRACKED



↓ HOPPER AND BELT FEEDER

- 4.3m³ (5.6yd³) capacity
- 3.7mm (12' 2") hopper length
- 900mm (35") 3 ply plain belt, 4 + 2 covers
- Variable speed c/w intelligent feed control
- Hopper extensions



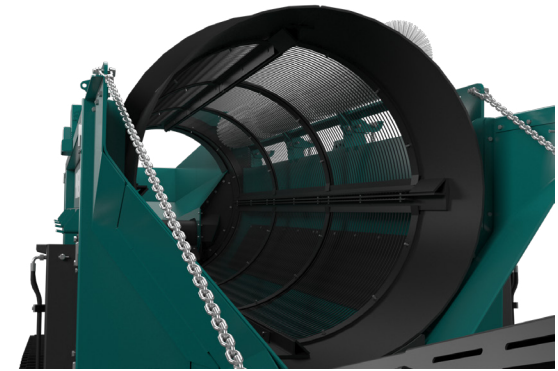


PHOENIX 1600 TRACKED



DRUM

- 4.9m (16') Length
- 1.54m (5') Diameter
- 19m² (205ft²) screening area
- Friction four wheel drum drive system
- Variable speed control
- Mesh or Punch plate panels
- Inclined drum (2-5°)





PHOENIX 1600 TRACKED



↓ POWER UNIT & HYDRAULICS

- Engine:
 - CAT C4.4 82kW (110HP) Tier 4 Final (USA & EU)
 - CAT C4.4 97kW (130HP) Constant Speed (EU)
- Fuel capacity: 327L (86 US gal)
- Hydraulic capacity: 425L (112 US gal)
- Excellent service access
- Powerful hydraulics



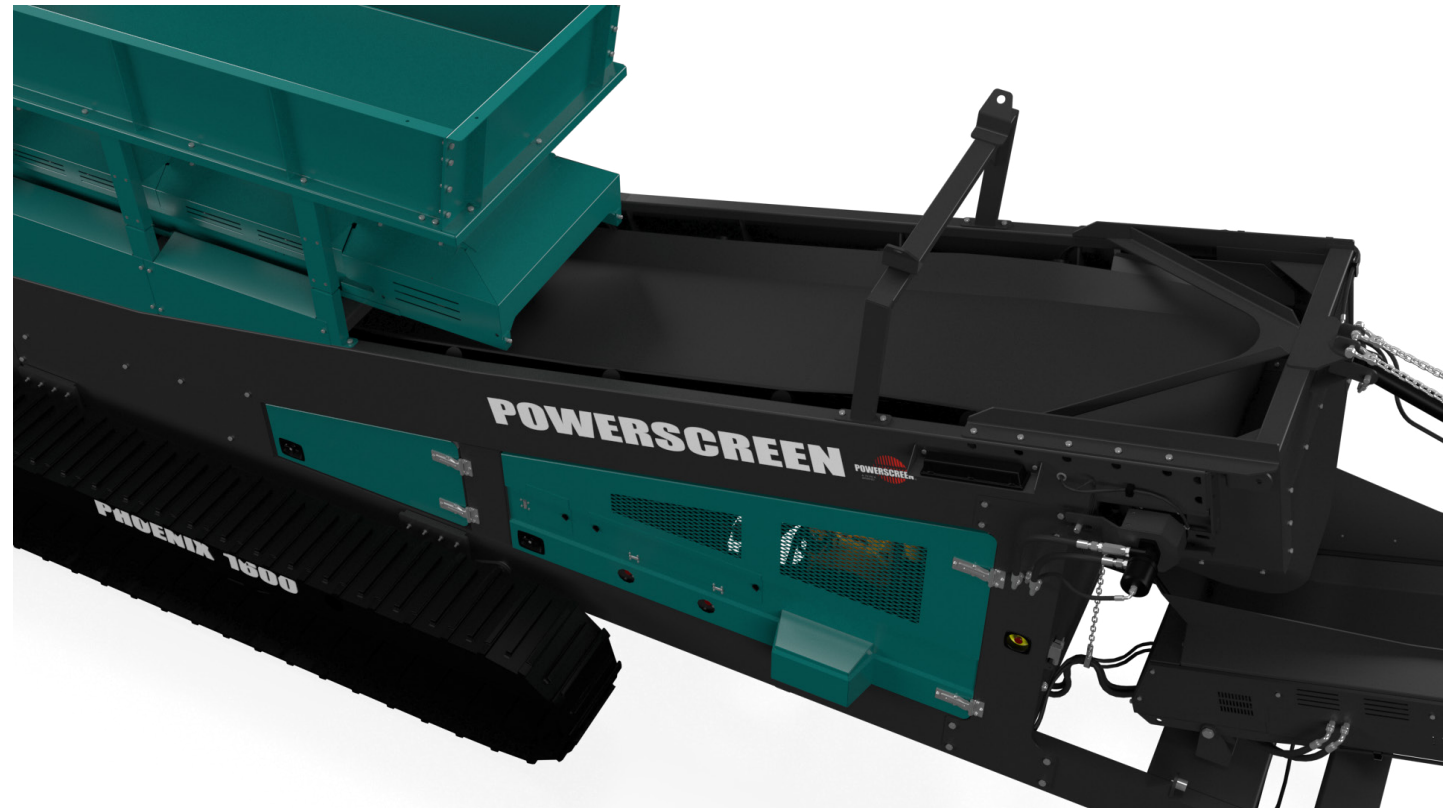


PHOENIX 1600 TRACKED



↓ COLLECTION CONVEYOR

- 1200mm (47") 3 ply plain belt, 4 + 2 covers
- Length: 11400mm (37' 5")



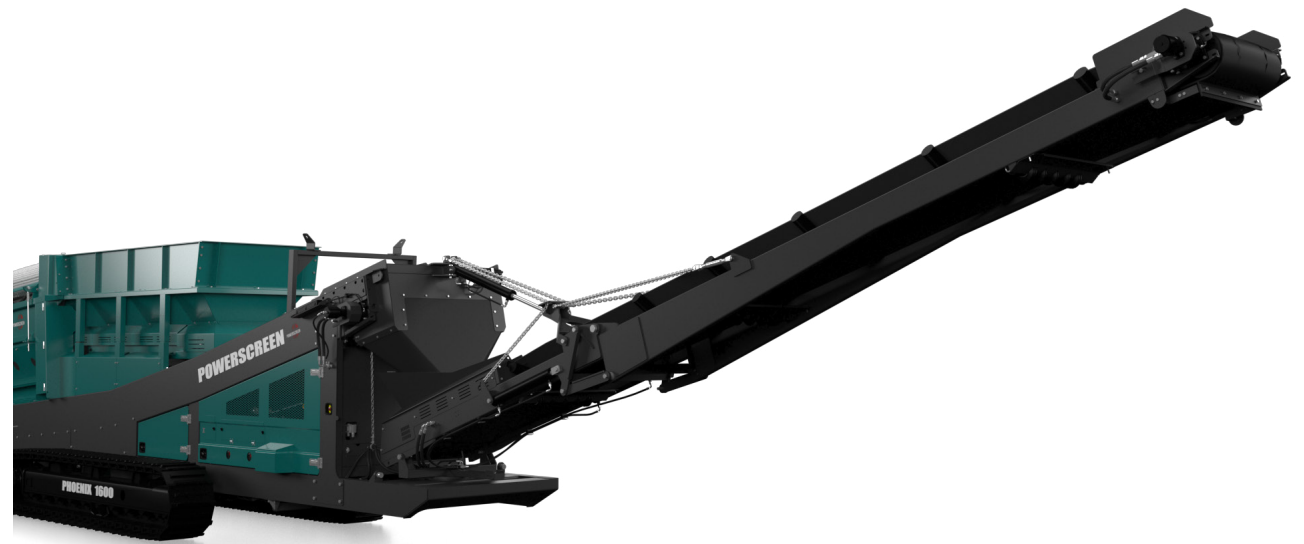


PHOENIX 1600 TRACKED



FINES DISCHARGE CONVEYOR

- Width: 800mm (32") 3 ply plain belt, 5 + 1.5 covers
- Length: 8700mm (28' 7")
- 180 Degree radial
- Discharge height 5.65m (18' 6") @ 30°



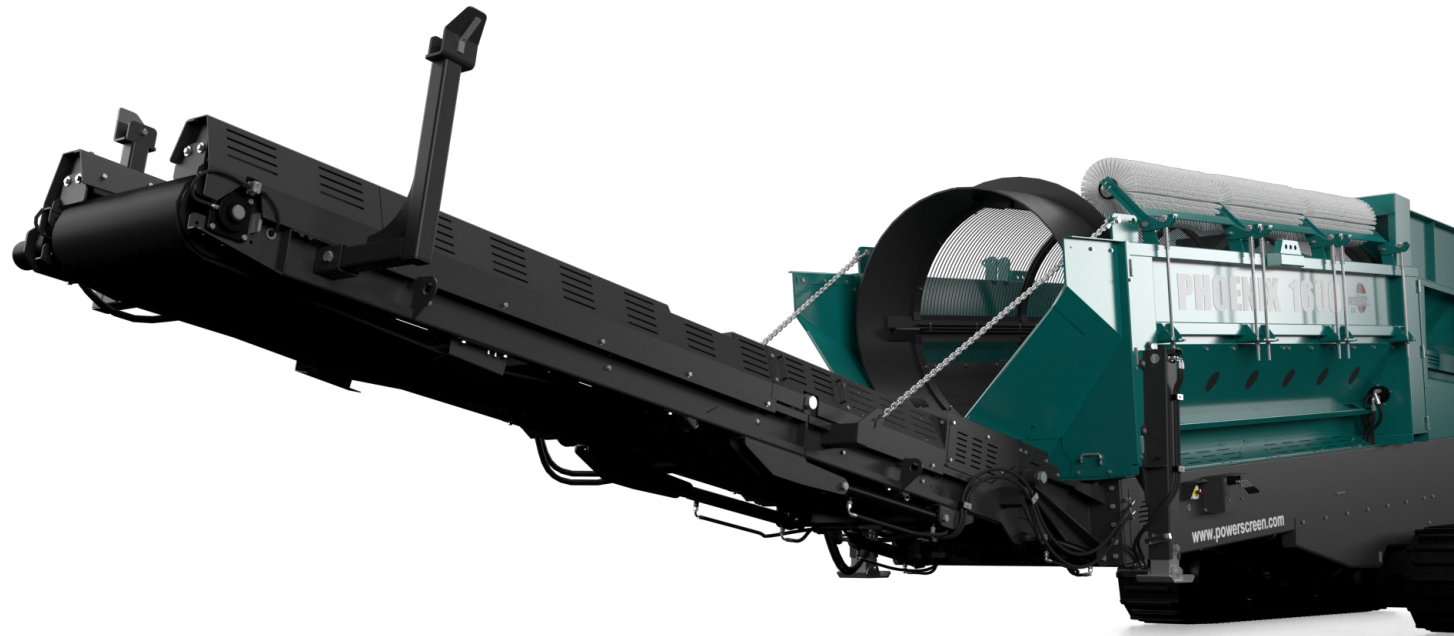


PHOENIX 1600 TRACKED



↓ OVERSIZE CONVEYOR

- Width: 800mm (32") 3 ply chevron belt, 3 + 1.5 covers
- Length: 5400mm (17' 9")
- Variable speed control
- Discharge height 3.59m (11' 9") @ 30°



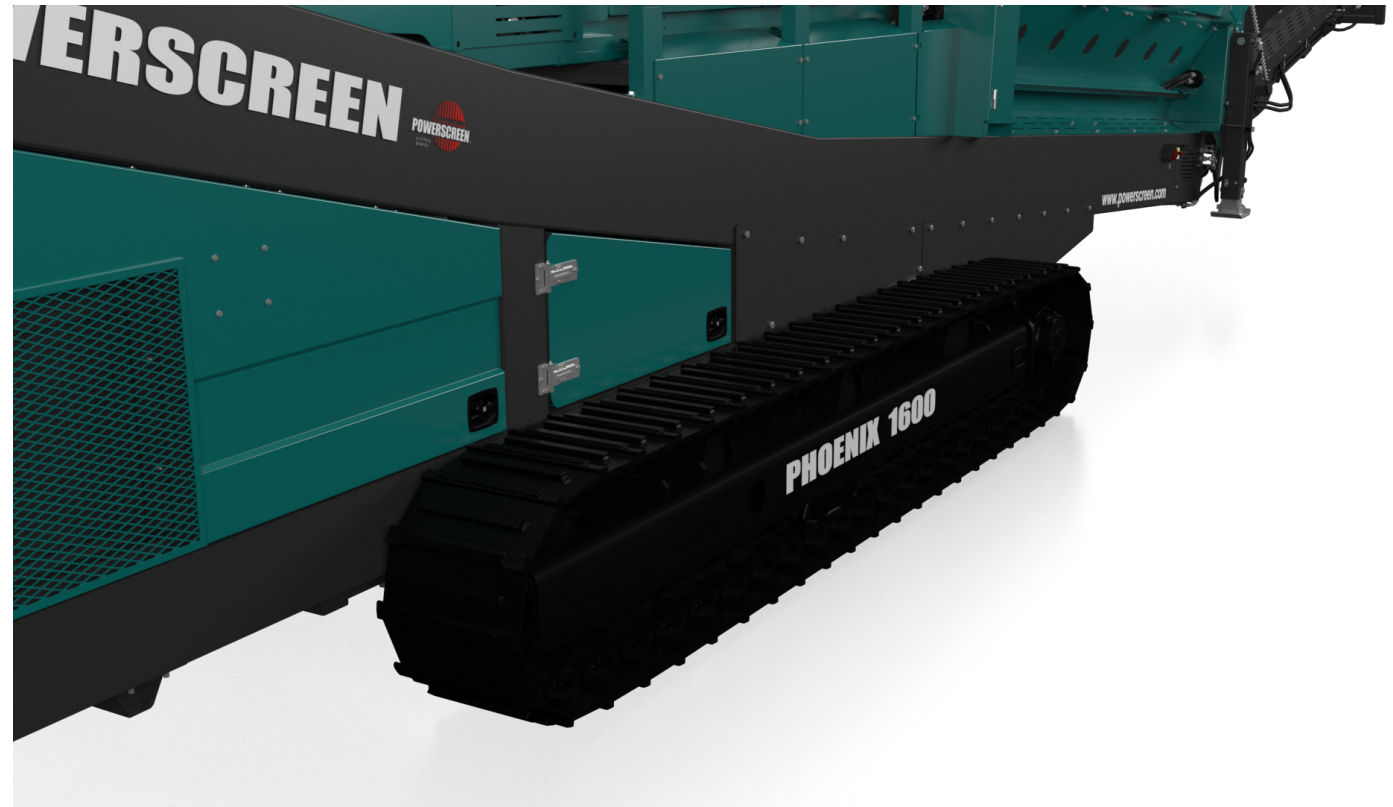


PHOENIX 1600 TRACKED



TRACKS

- Bolt on tracks
- 400mm (16") shoe
- 4.3m (13' 1") sprocket centres





PHOENIX 1600 TRACKED



OPTIONS

- Tipping grid
- Tipping grid discharge chute
- Heavy duty woven mesh
- Punch plate
- Additional remote control for tracking
- Different colour paint
- Powerscreen Pulse





PHOENIX 1600 TRACKED



↓ POWERSCREEN PULSE

RECORD, DISPLAY AND ANALYSE DATA:

HIGH EFFICIENCY THROUGH PRECISE INFORMATION

Available online anywhere and at any time: comprehensive information on the GPS location, start and stop times, fuel consumption, tonnages, cone settings, wear ratings, operating hours, maintenance status, and much more.




AVAILABLE ANYWHERE AND AT ANY TIME



DASHBOARD DISPLAY



FLEET OVERVIEW



WEEKLY REPORT DIRECT TO YOUR INBOX



GPS: MACHINE TRACKING



REPORTING UTILISATION, PERFORMANCE & PART SPECIFIC

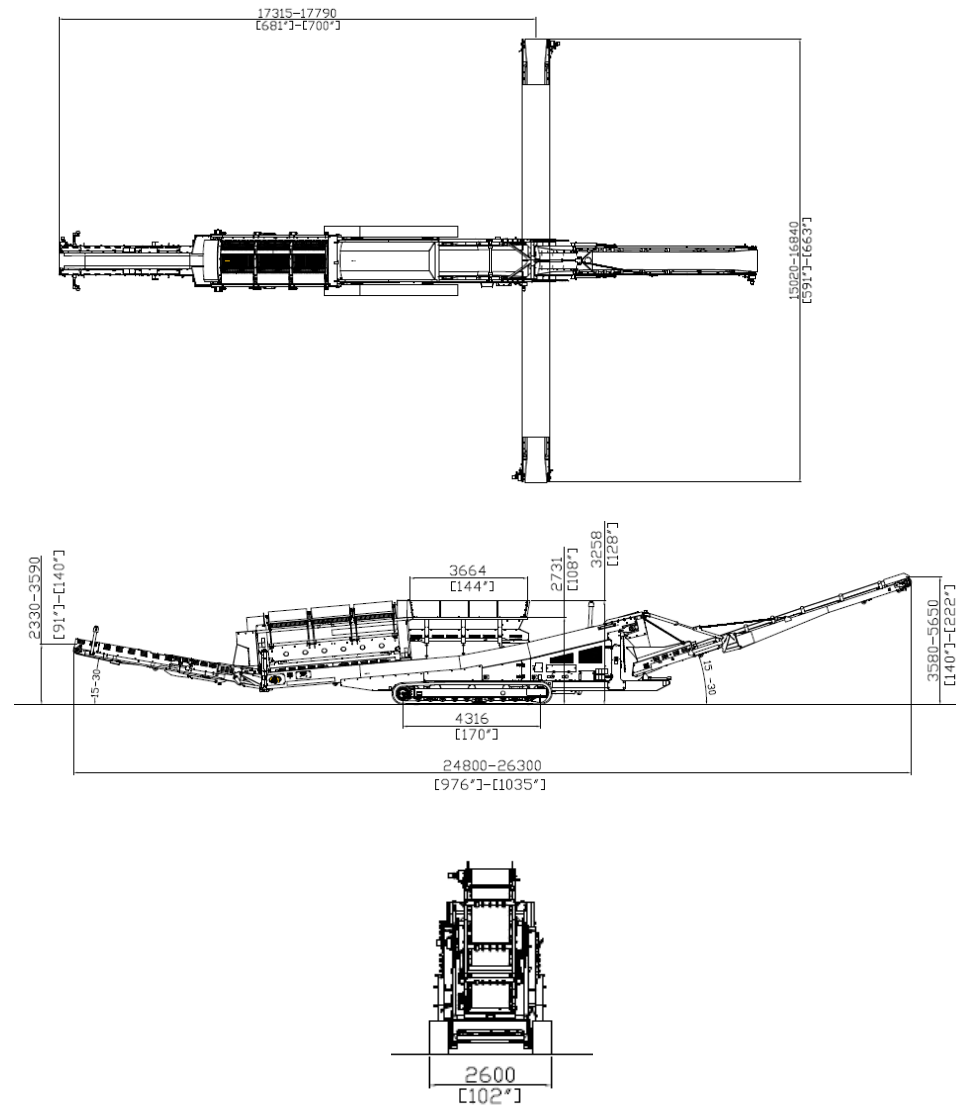


PHOENIX 1600 TRACKED



↓ DIMENSIONS

Figure 1: Phoenix 1600
Working Position



MORE DIMENSIONS OVERLEAF

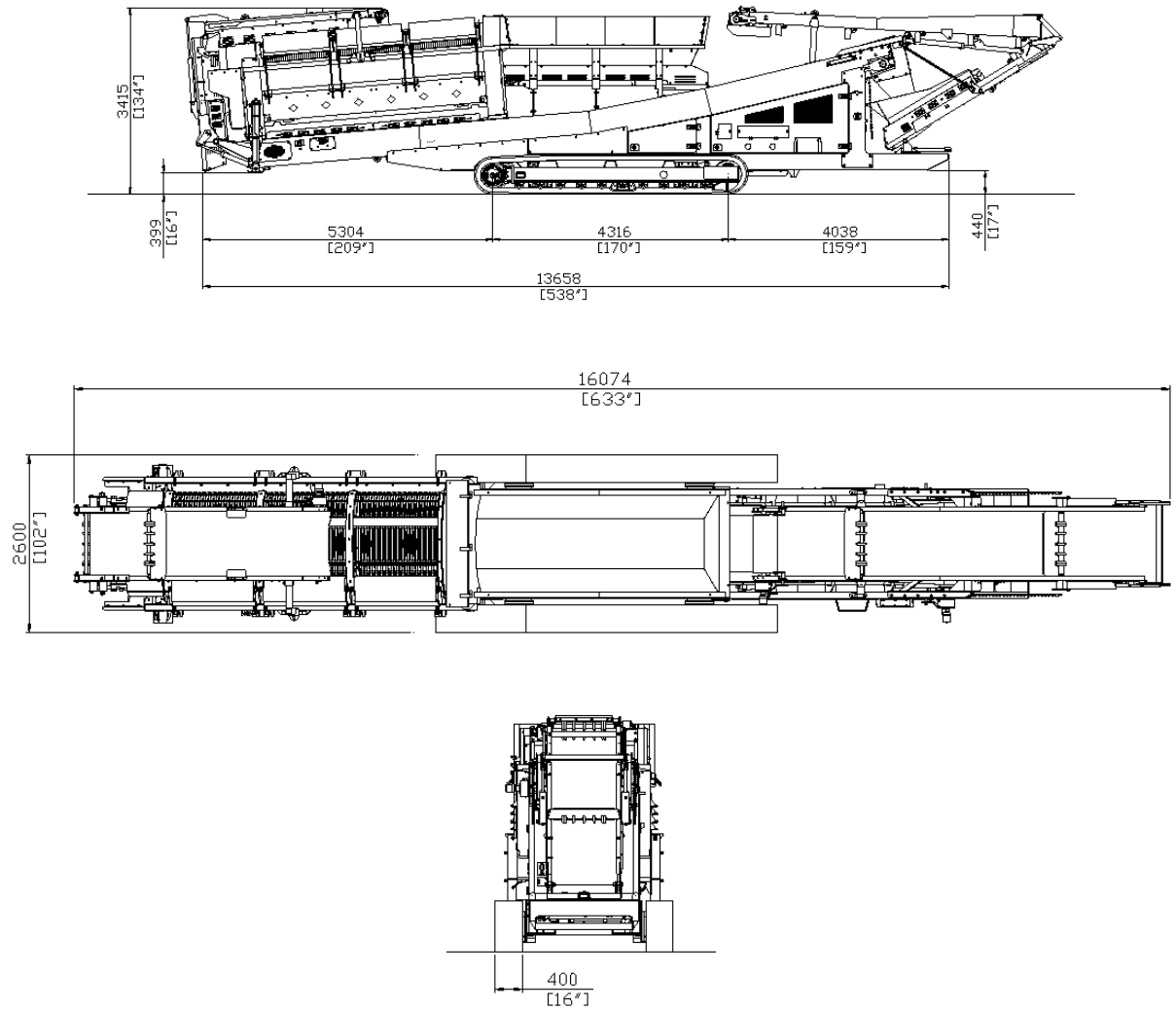


PHOENIX 1600 TRACKED



DIMENSIONS

Figure 2: Phoenix 1600
Transport Position





Powerscreen equipment complies with CE requirements.

Please consult Powerscreen if you have any other specific requirements in respect of guarding, noise or vibration levels, dust emissions, or any other factors relevant to health and safety measures or environmental protection needs. On receipt of specific requests, we will endeavour to ascertain the need for additional equipment and, if appropriate, quote extra to contract prices.

All reasonable steps have been taken to ensure the accuracy of this publication, however due to a policy of continual product development we reserve the right to change specifications without notice.

It is the importers' responsibility to check that all equipment supplied complies with local legislation regulatory requirements.

Plant performance figures given in this brochure are for illustration purposes only and will vary depending upon various factors, including feed material gradings and characteristics. Information relating to capacity or performance contained within this publication is not intended to be, nor will be, legally binding.

GET IN TOUCH

Dungannon

200 Coalisland Road, Dungannon,
Co Tyrone, BT71 4DR, Northern Ireland
Tel: +44 (0) 28 87 718 500
Fax: +44 (0) 28 87 747 231

Louisville

11001 Electron Drive,
Louisville, Kentucky, 40299 USA
Tel: +1 502 736 5200
Fax: +1 502 736 5202

