

# POWERSCREEN® PHOENIX 3300

TROMMEL SCREEN



TECHNICAL SPECIFICATION - REV 0.1 17/10/2019





## PHOENIX 3300



# ↓ OVERVIEW

### SPECIFICATION

<b>Total Weight</b>	37,500kg (82,673lbs) - depending on options
<b>Transport</b>	<b>Length</b> 21.1m (69' 2")
	<b>Height</b> 4.1m (13' 6")
	<b>Width</b> 3m (9' 10")
<b>Working</b>	<b>Length</b> 32.3m (105' 9")
	<b>Width</b> 15.8m (51' 8")
	<b>Height</b> 5.9m (19' 4")

### The Phoenix 3300 is designed to offer unrivalled production throughput and application flexibility.

The Powerscreen Phoenix 3300 trommel screen is designed to offer unrivalled production throughput and application flexibility. The robust design with optional features such as heavy duty tipping grid or double deck vibrating grid make the Phoenix 3300 the most versatile trommel on the market today. The machine performs equally well in heavy C&D applications as it does in high volume compost production. The 180° swivel fines conveyor, with a 5.89m (19' 3") discharge, means the machine can generate massive stockpiles. This swivel feature can be controlled via a radio remote while the machine is in operation, minimising downtime.

A powerful four wheel drive system with high performance friction grip wheels is used to turn the trommel drum giving operators the ability to run bi-directionally. Woven mesh or heavy duty punch plate panels can be fitted to the trommel drum ensuring all application requirements are met.

Caterpillar Tier 3 or Tier 4 engines combined with powerful hydraulics and auto feeder speed control guarantee the machine is always working at its optimum. A fifth wheel connection, triple axle bogie and a rapid setup time make the machine highly mobile.

The Phoenix 3300 is highly efficient in the separation and processing of wood chippings, top soil, compost, green waste, C&D waste and aggregates.



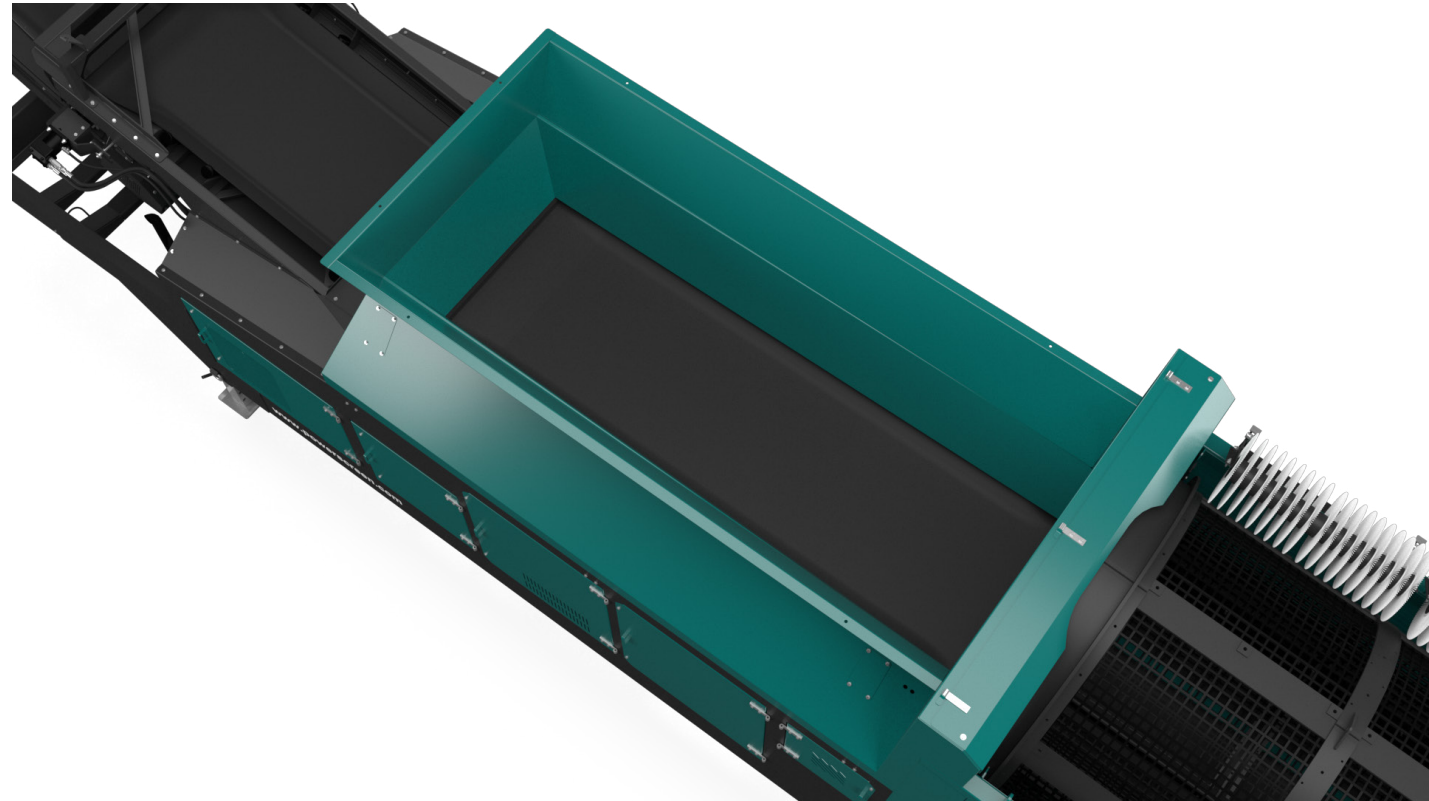


## PHOENIX 3300



# HOPPER AND BELT FEEDER

- 7.8m<sup>3</sup> (10.2yd<sup>3</sup>) capacity
- 4.6m (15' 1") feeder length
- 1500mm (59") 3 ply plain belt, 4 + 2 covers
- Variable speed control c/w load sensing and automatic feeder shutdown
- Hopper extensions



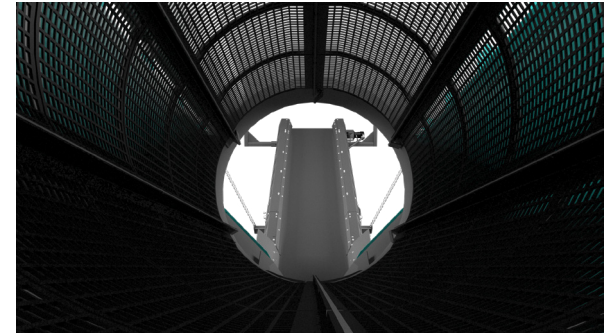


## PHOENIX 3300



### DRUM

- 9.31m (30' 6") Length
- 2.32m (7' 6") Diameter
- Friction four wheel drum drive system
- Variable speed control
- Mesh or Punch plate panels
- Inclined drum
- Variable operating angle 4.5° - 6°
- Tumbling action c/w nylon cleaning brushes
- Service access doors for maintenance





## PHOENIX 3300



# ↓ POWER UNIT & HYDRAULICS

- Caterpillar C7.1 Tier 3, 151kW (202 hp), 2200rpm max
- Caterpillar C4.4 Tier 4F 129kW (173hp), 2200rpm max (option)
- Fuel tank capacity 610L (134 Gal) (161 US Gal)
- Hydraulic tank 714L (157 Gal) (189 US Gal)
- Excellent service access
- Powerful hydraulics



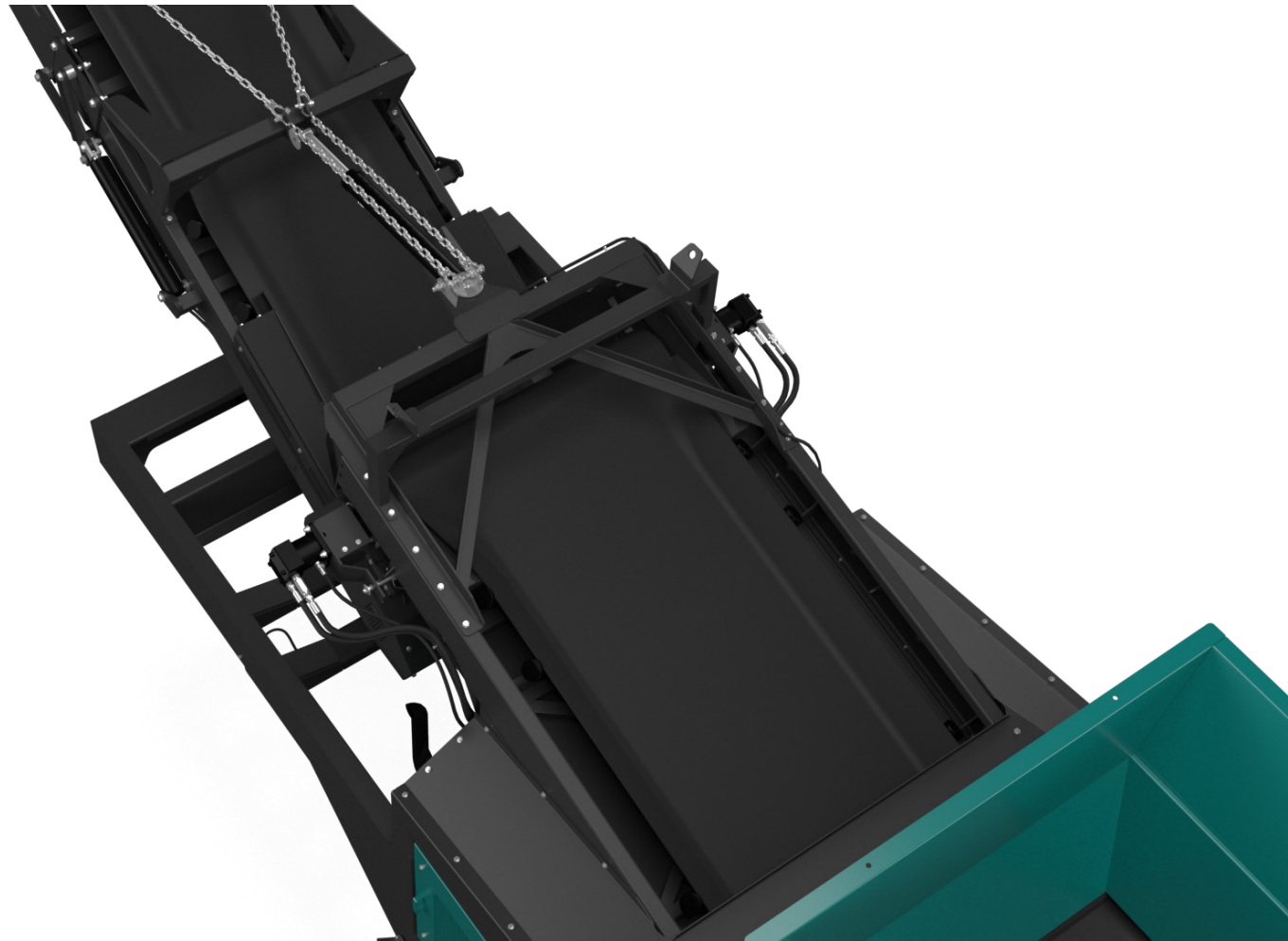


## PHOENIX 3300



# COLLECTION CONVEYOR

- 1500mm (59") 3 ply plain belt, 4 + 2 covers
- Fully skirted & sealed
- Variable speed control





## PHOENIX 3300



# FINES DISCHARGE CONVEYOR

- 1200mm (47") 3 ply plain belt, 4 + 2 covers
- Remote control 180° swivel
- Variable operating angle 10° - 28°
- Discharge height 5.89m (19' 3") @ 28°
- Variable speed control
- Hydraulic folding





## PHOENIX 3300



# OVERSIZE CONVEYOR

- 1200mm (47") 3 ply chevron belt, 4 + 2 covers
- Full length skirting
- Variable speed control
- Hydraulic folding
- Variable operating angle 10° - 28°
- Discharge height 4.16m (13' 7") @ 28°





## PHOENIX 3300



## **BOGIE**

- 3 axles, 10 studs
- Suspension type leaf spring
- Super single c/w 385/65 R22.5 tyres
- Fifth wheel connection
- Airbrakes



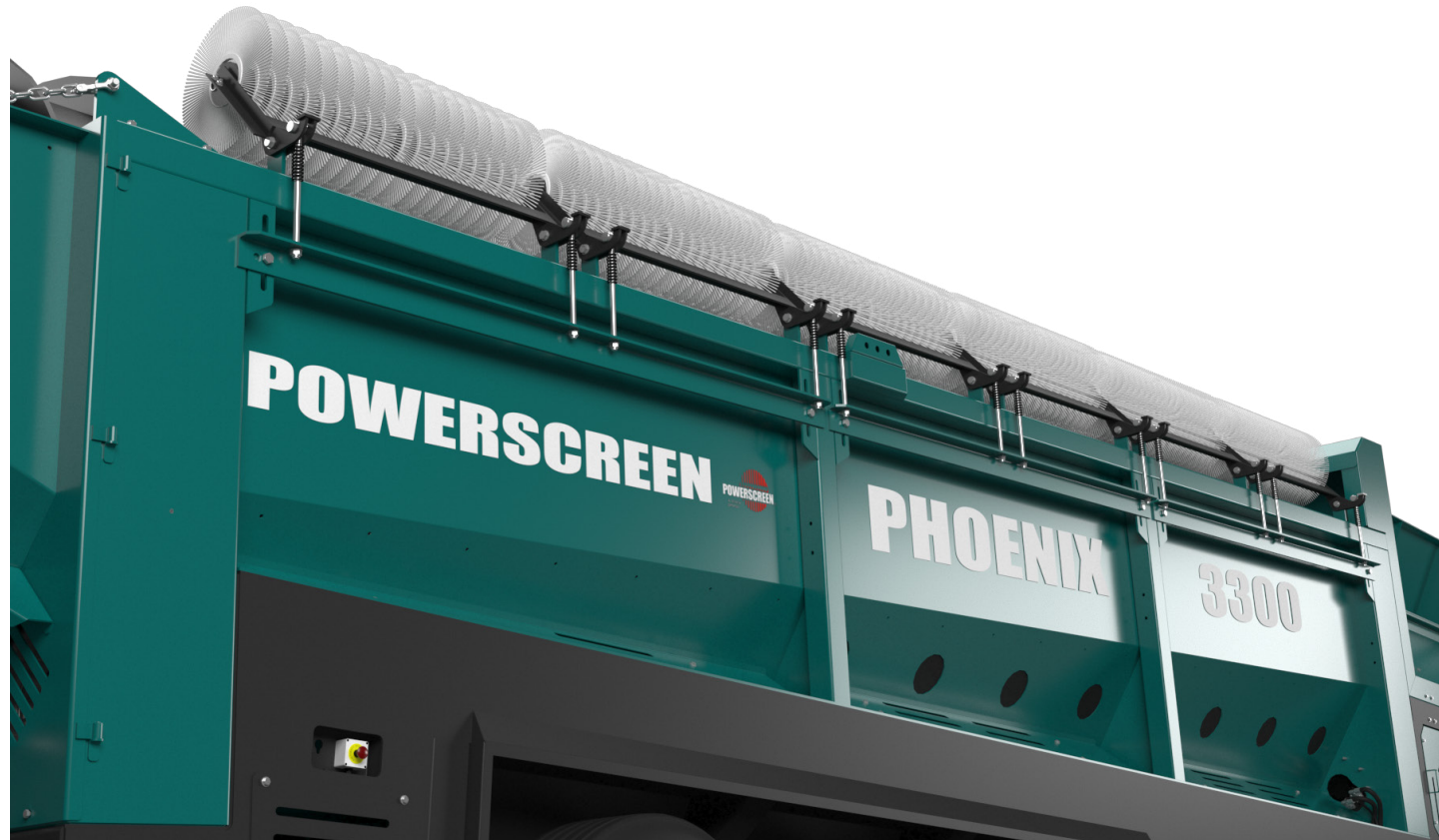


## PHOENIX 3300



## OPTIONS

- Remote control tipping grid 100mm (4")
- Remote control tipping grid 150mm (6")
- 2 Deck vibrating grid c/w tri-axle bogie
- Tipping grid discharge chute
- Heavy duty woven mesh
- Punch plate
- Different colour paint
- Powerscreen Pulse





## PHOENIX 3300



# ↓ POWERSCREEN PULSE

## RECORD, DISPLAY AND ANALYSE DATA:

HIGH EFFICIENCY THROUGH PRECISE INFORMATION

Available online anywhere and at any time: comprehensive information on the GPS location, start and stop times, fuel consumption, tonnages, cone settings, wear ratings, operating hours, maintenance status, and much more.




**AVAILABLE ANYWHERE AND AT ANY TIME**



**DASHBOARD DISPLAY**



**FLEET OVERVIEW**



**WEEKLY REPORT DIRECT TO YOUR INBOX**



**GPS: MACHINE TRACKING**



**REPORTING UTILISATION, PERFORMANCE & PART SPECIFIC**

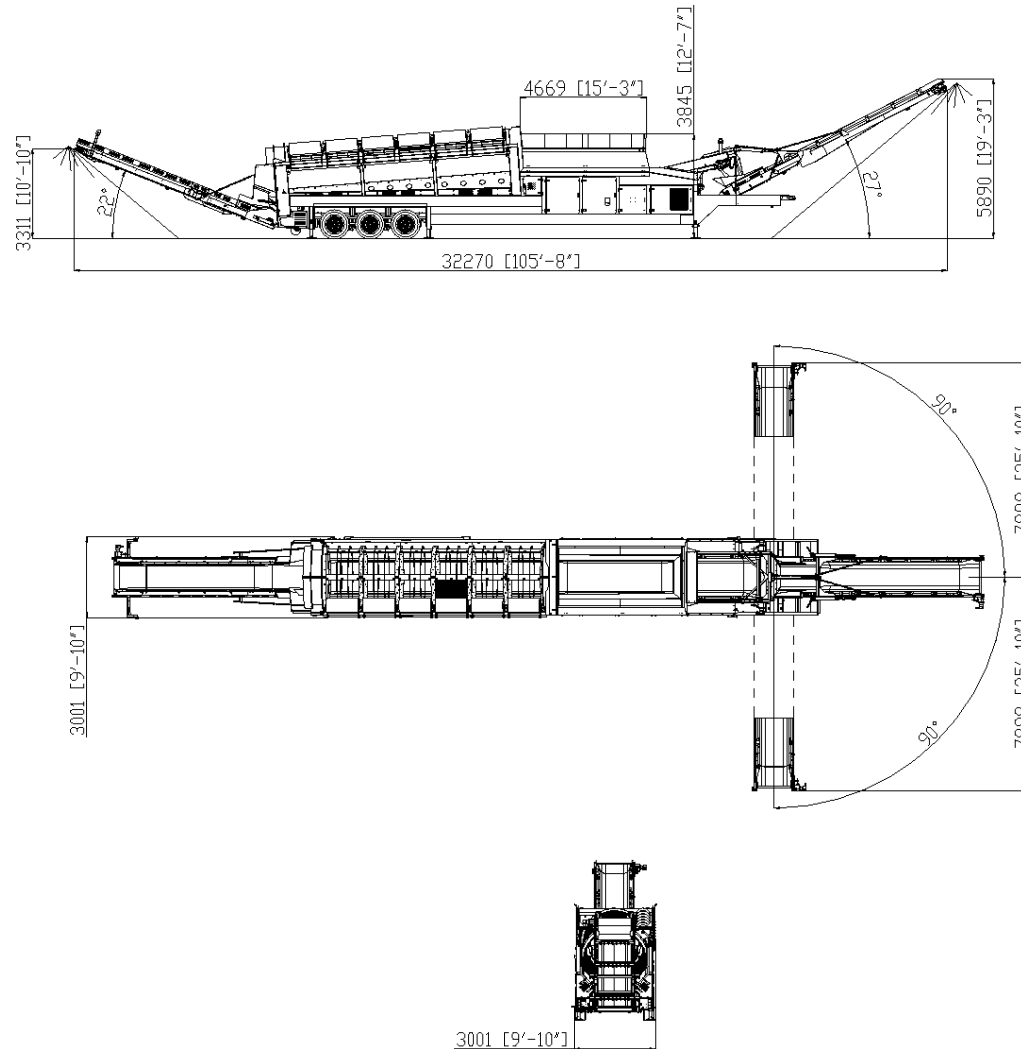


## PHOENIX 3300



# ↓ DIMENSIONS

Figure 1: Phoenix 3300  
Working Position



MORE DIMENSIONS OVERLEAF



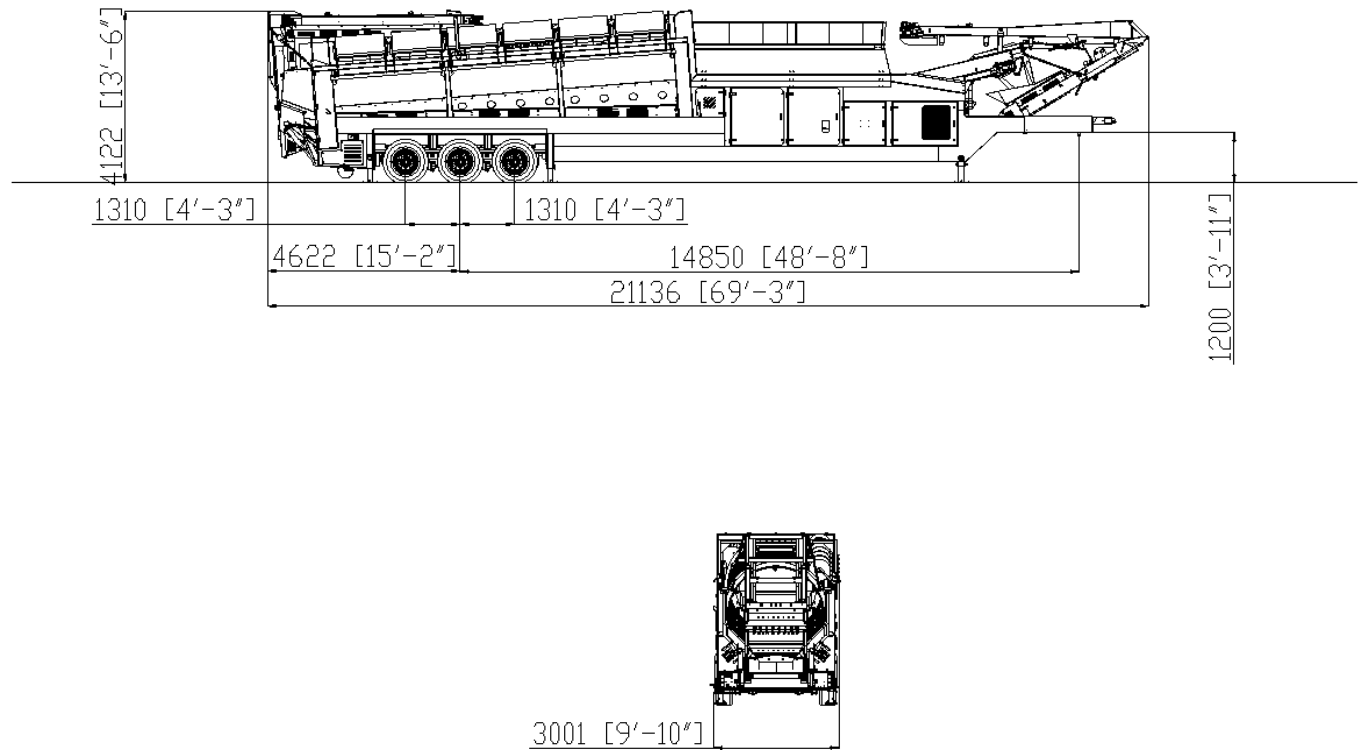
## PHOENIX 3300



# DIMENSIONS

Figure 2: Phoenix 3300  
Transport Position

Please note: It is the dealers responsibility to ensure the plant is road legal in their region.





### **Powerscreen equipment complies with CE requirements.**

Please consult Powerscreen if you have any other specific requirements in respect of guarding, noise or vibration levels, dust emissions, or any other factors relevant to health and safety measures or environmental protection needs. On receipt of specific requests, we will endeavour to ascertain the need for additional equipment and, if appropriate, quote extra to contract prices.

All reasonable steps have been taken to ensure the accuracy of this publication, however due to a policy of continual product development we reserve the right to change specifications without notice.

It is the importers' responsibility to check that all equipment supplied complies with local legislation regulatory requirements.

Plant performance figures given in this brochure are for illustration purposes only and will vary depending upon various factors, including feed material gradings and characteristics. Information relating to capacity or performance contained within this publication is not intended to be, nor will be, legally binding.

## **GET IN TOUCH**

### **Dungannon**

200 Coalisland Road, Dungannon,  
Co Tyrone, BT71 4DR, Northern Ireland  
Tel: +44 (0) 28 87 718 500  
Fax: +44 (0) 28 87 747 231

### **Louisville**

11001 Electron Drive,  
Louisville, Kentucky, 40299 USA  
Tel: +1 502 736 5200  
Fax: +1 502 736 5202

