

POWERSCREEN® CT-75R

RADIAL CONVEYOR



TECHNICAL SPECIFICATION - REV 2 01/02/2021





CT-75R - RADIAL CONVEYOR



OVERVIEW

SPECIFICATION

Total Weight	19,800kg (43,652lbs)
Transport	Length 15.2m (49' 10")
	Height 3.36m (11')
	Width 2.52m (8' 3")
Working @ 23°	Length 22.66m (74' 4")
	Height 11.65m (38' 3")
	Width 5.29m (17' 4")
Power Unit	Tier 3: CAT 4.4 62kW (83hp) or, Tier 4F: CAT 4.4 82kW (110hp) or, Stage IV: Deutz TC 2.9 L4 55kW (73hp)
Plant Colour	Blue RAL 5021, Grey RAL 7024

NOTE: Dimensions may differ slightly from sales drawings due to differences in angles / reference points.

FEATURES & BENEFITS

- High capacity up to 600tph (661 US tph).
- Maximum feed size up to 150mm (6").
- Eliminates the need for wheeled loaders to create stockpiles - reduces labour and maintenance costs.
- Eliminates the need for handling material multiple times - reduces labour and maintenance costs.
- Improved material quality due to reduced compaction, degradation, segregation and contamination.
- Multiple hopper options available depending on required capacities and operators loading methods or application.
- Rapid set up time and manoeuvrability around site.
- Reduced fuel consumption due to reduced reliance on wheeled loaders.
- Reduced wear on wheeled loaders where a conveyor is utilised.
- Semi automated stockpiling program as standard.
- Fully automated stockpiling program.
- Feedboot sealed with slider pads.
- Tracking with wheel drive assist for better traction onto trailers.
- Wheel braking when tracks brakes - improved safety.
- Radio remote option for radial, conveyor raise / lower & conveyor start / stop.
- Heavy duty belt tensioner
- Hydraulic discharge height adjustment.
- Hydraulic folding for transport.
- Spring mounted poly blade head drum scraper.

APPLICATIONS



Aggregate

Sand & gravel
Blasted rock
River rock



Recycling

C&D waste
Foundry waste



Mining

Processed ores
Processed minerals

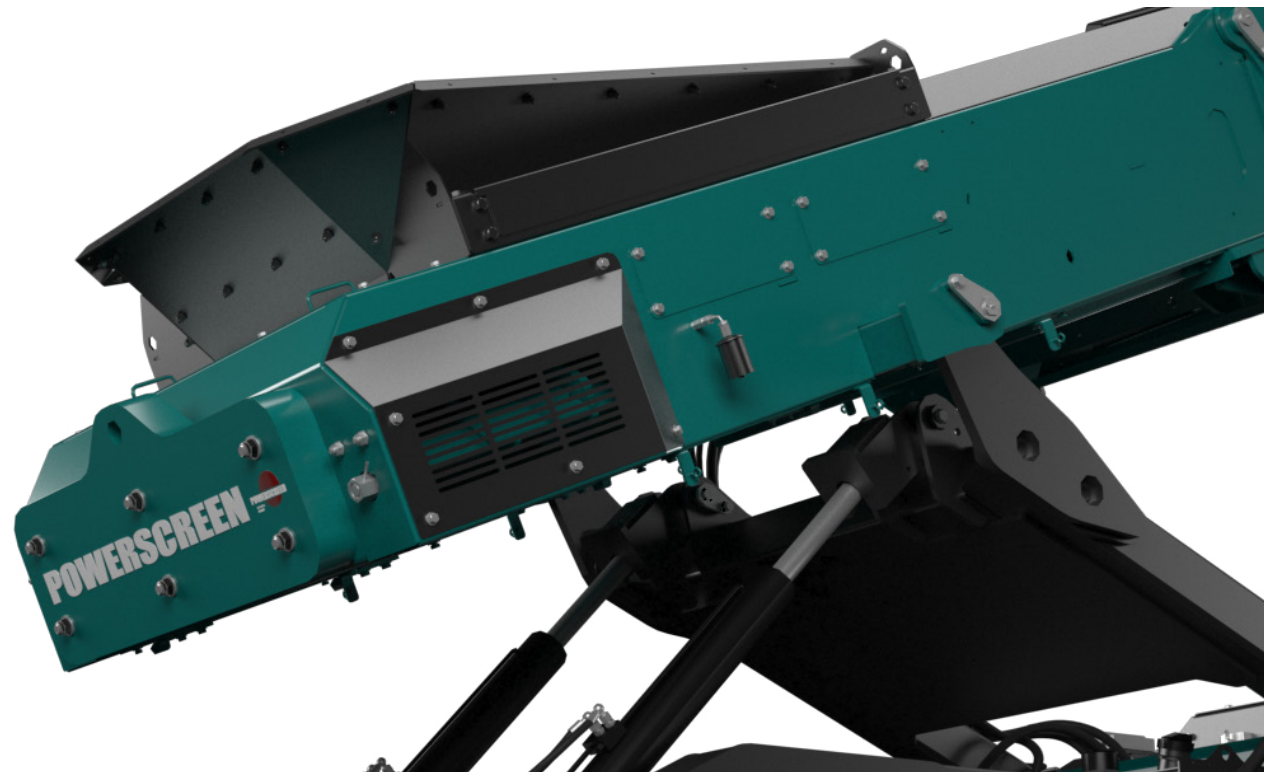


CT-75R - RADIAL CONVEYOR



FEEDBOOT

Standard Feedboot Capacity:	0.6 m ³ (0.8yd ³)
Feed in Width:	1300mm (4' 3")
Extended Feedboot Capacity:	1.6m ³ (2.1yd ³)
Extended Feed in Width:	2136mm (7')
Min Feed Height:	2400mm (7' 10")
Extended Min Feed Height:	2750mm (9")





CT-75R - RADIAL CONVEYOR



DISCHARGE CONVEYOR

Width:	1050mm (42")
Belt Centres:	22.9m (75' 1")
Belt Type:	Plain
Belt Spec:	EP400 3 4+2
Drive Drum Dia:	340mm (13.4")
Tail Drum Dia:	270mm (10.6")
Max Belt Speed:	124m/m
Motor Size:	630cc
Operating Angle:	5° - 23°
Discharge Height @18°:	9m (29' 6")
Stockpile Capacity @18° & 37° Angle of Repose:	Conical: 1344m ³ (1758 Cu.Yd) / 125° Kidney Bean: 3220m ³ (4212 Cu.Yd)
Discharge Height @23°:	10.9m (34' 9")
Stockpile Capacity @23° & 37° Angle of Repose:	Conical: 2388m ³ (3123 Cu.Yd) / 125° Kidney Bean: 5140m ³ (6722 Cu.Yd)





CT-75R - RADIAL CONVEYOR



TRACKS

Shoe Width:	400mm (1' 4")
Sprocket Centre:	1800mm (5' 11")
Outer Width:	2250mm (7' 5")
Gradability:	47.7°
Speed:	0.6km/h
Track Flow:	78.6Lpm





CT-75R - RADIAL CONVEYOR



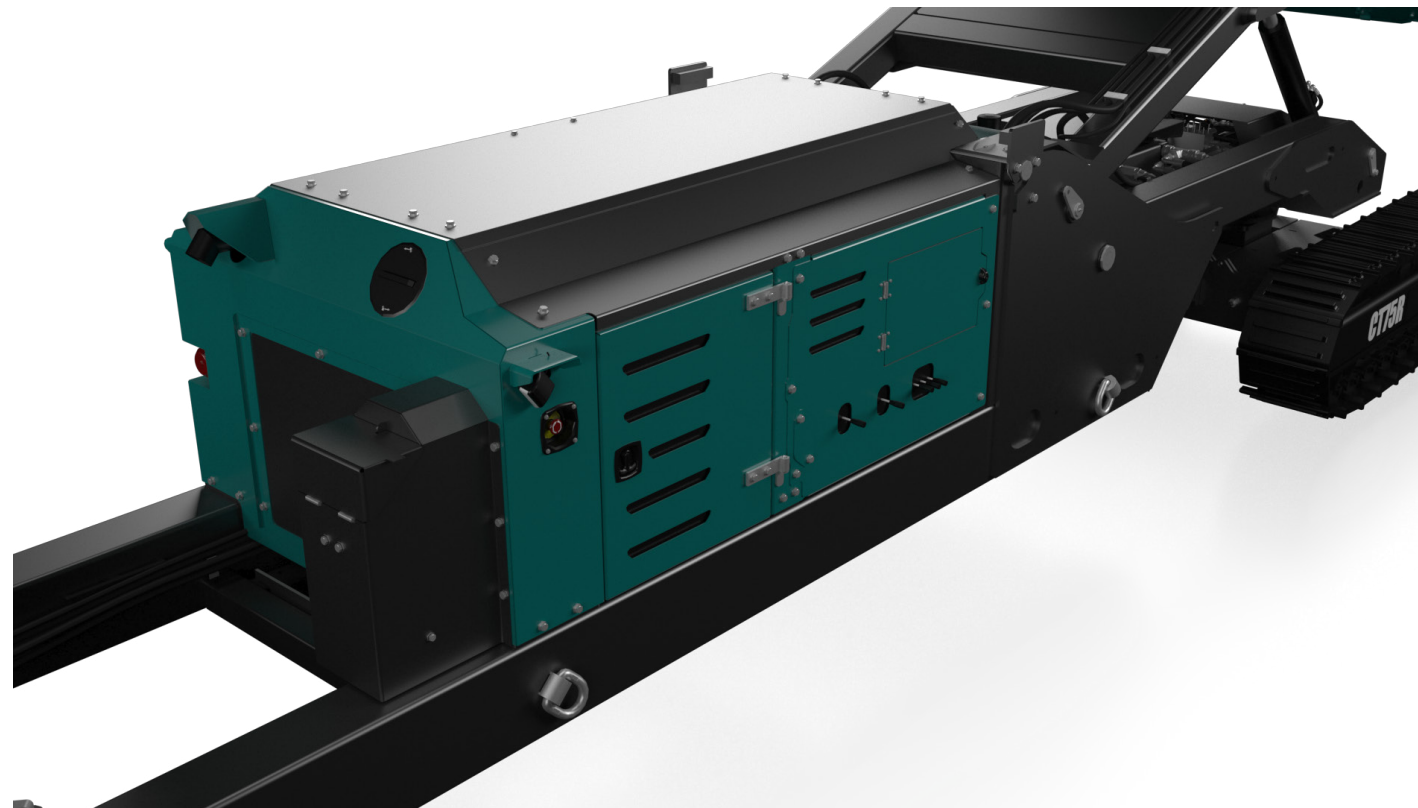
↓ POWER UNIT & HYDRAULICS

Engine (Tier 3): CAT 4.4
Power Rating: 62kW (83hp)
RPM: 1800rpm
Crankshaft Pump: 23/23/10/4

Engine (Tier 4F): CAT 4.4
Power Rating: 82kW (110hp)
RPM: 1800rpm
Crankshaft Pump: 23/23/10/4

Engine (Stage IV): Deutz TC 2.9 L4
Power Rating: 55kW (73hp)
RPM: 1800rpm
Crankshaft Pump: 23/23/10/4

Diesel Tank Capacity: 220L (58 US GAL)
Hydraulic Tank Capacity: 400L (106 US GAL)





CT-75R - RADIAL CONVEYOR



OPTIONS

- Dust hood
- Canvas dust covers complete with dust hood on discharge conveyor
- Full length skirting rubber
- Conveyor blade type / primary scraper at head drum (plain belt only)
- Anti-roll back flaps
- Discharge belt upgraded to heavy duty belt EP500 4 Ply x 8 + 2 covers
- Conveyor under guard length of mid-section
- Dust suppression at conveyor head drum (spray bar only)
- Belt weigher
- Pull cord E-Stop available on either side of machine
- Radio remote for tracks, radial & conveyor raise / lower
- Steel feedboot wear liners 6mm AR400
- 20mm rubber feedboot liners
- Feedboot extension with steel wear liners
- Feedboot extension with rubber wear liners
- Feedboot extension with 6mm AR400 wear liners
- Impact bed at feedboot area
- Chevron belt EP315/3 ply 3 + 1.5 covers
- Conveyor head drum guarding
- Auto radial & raise function
- Grade ISO 68 hydraulic oil (recommended for ambient temperatures between +15 and +50 degrees)
- Twin hydraulic drive discharge conveyor.
- Powerscreen Pulse





CT-75R - RADIAL CONVEYOR



↓ POWERSCREEN PULSE

RECORD, DISPLAY AND ANALYSE DATA:

HIGH EFFICIENCY THROUGH PRECISE INFORMATION

Available online anywhere and at any time: comprehensive information on the GPS location, start and stop times, fuel consumption, tonnages, cone settings, wear ratings, operating hours, maintenance status, and much more.




AVAILABLE ANYWHERE AND AT ANY TIME



DASHBOARD DISPLAY



FLEET OVERVIEW



WEEKLY REPORT DIRECT TO YOUR INBOX



GPS: MACHINE TRACKING



REPORTING
UTILISATION, PERFORMANCE & PART SPECIFIC



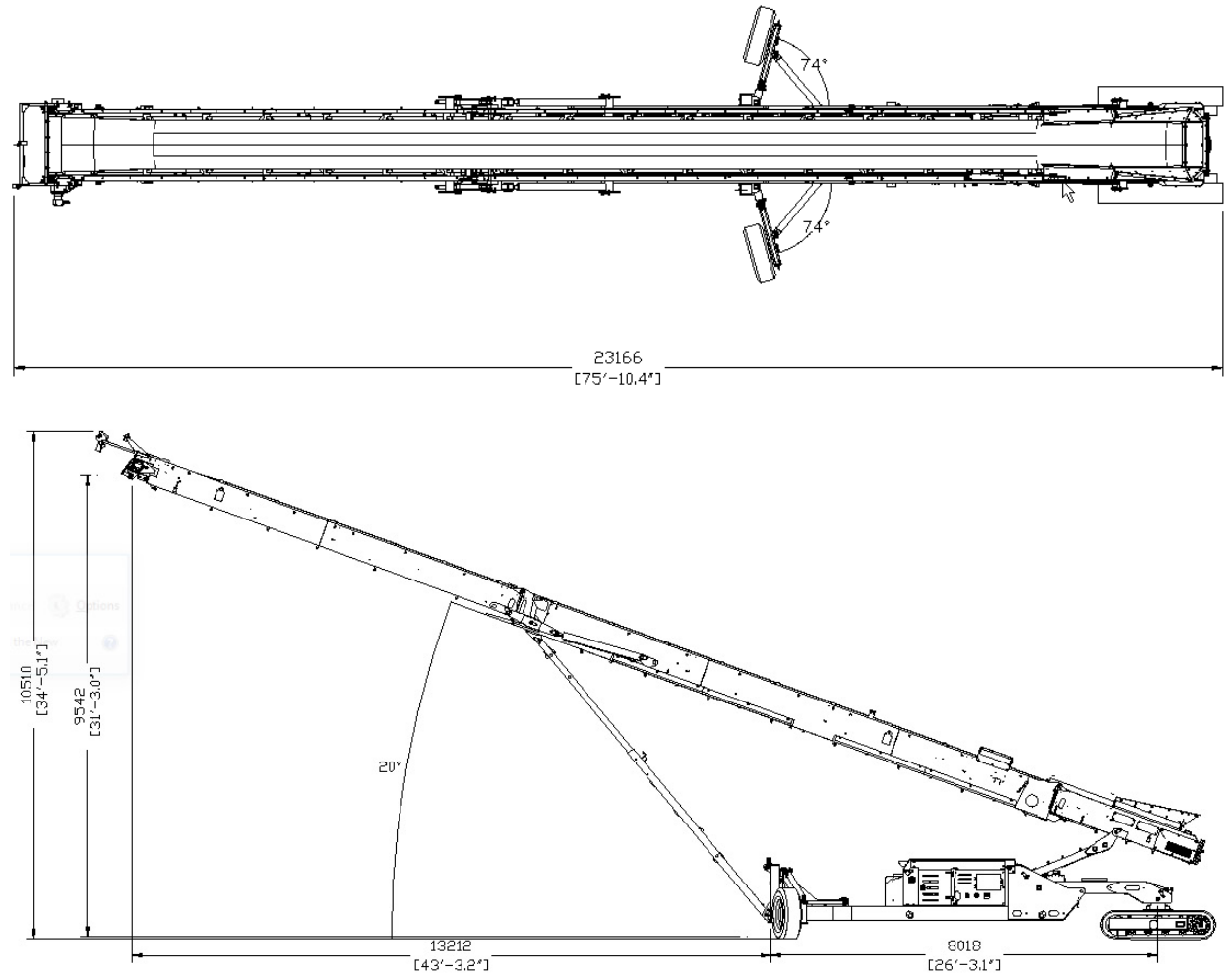


CT-75R - RADIAL CONVEYOR



DIMENSIONS

Figure 1: Powerscreen CT-75R
Working Position



MORE DIMENSIONS OVERLEAF

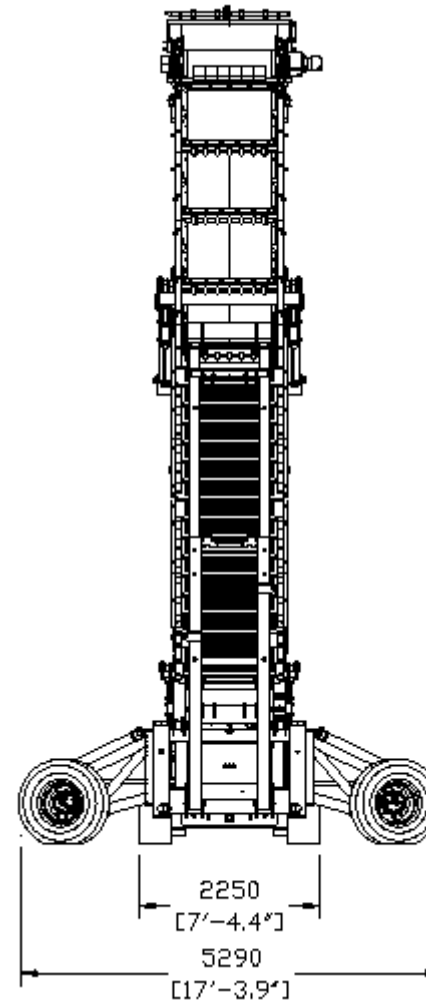


CT-75R - RADIAL CONVEYOR



DIMENSIONS

Figure 2: Powerscreen CT-75R
Working Position



[MORE DIMENSIONS OVERLEAF](#)

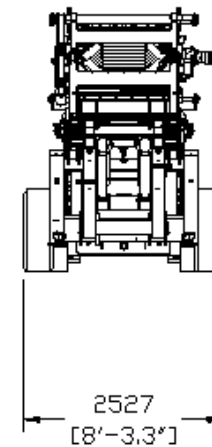
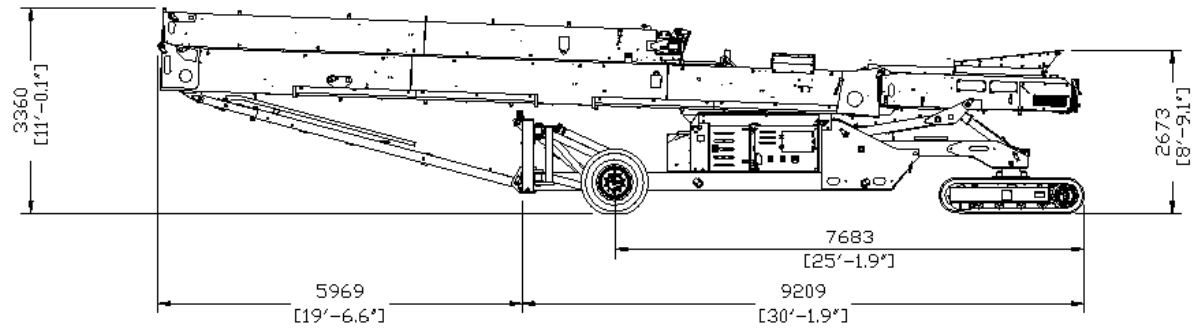
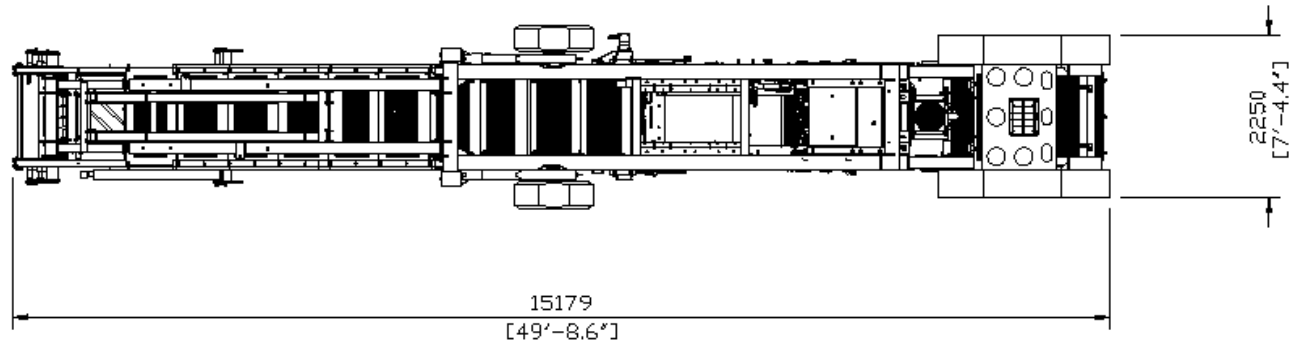


CT-75R - RADIAL CONVEYOR



↓ DIMENSIONS

Figure 3: Powerscreen CT-75R
Transport Position



MORE DIMENSIONS OVERLEAF

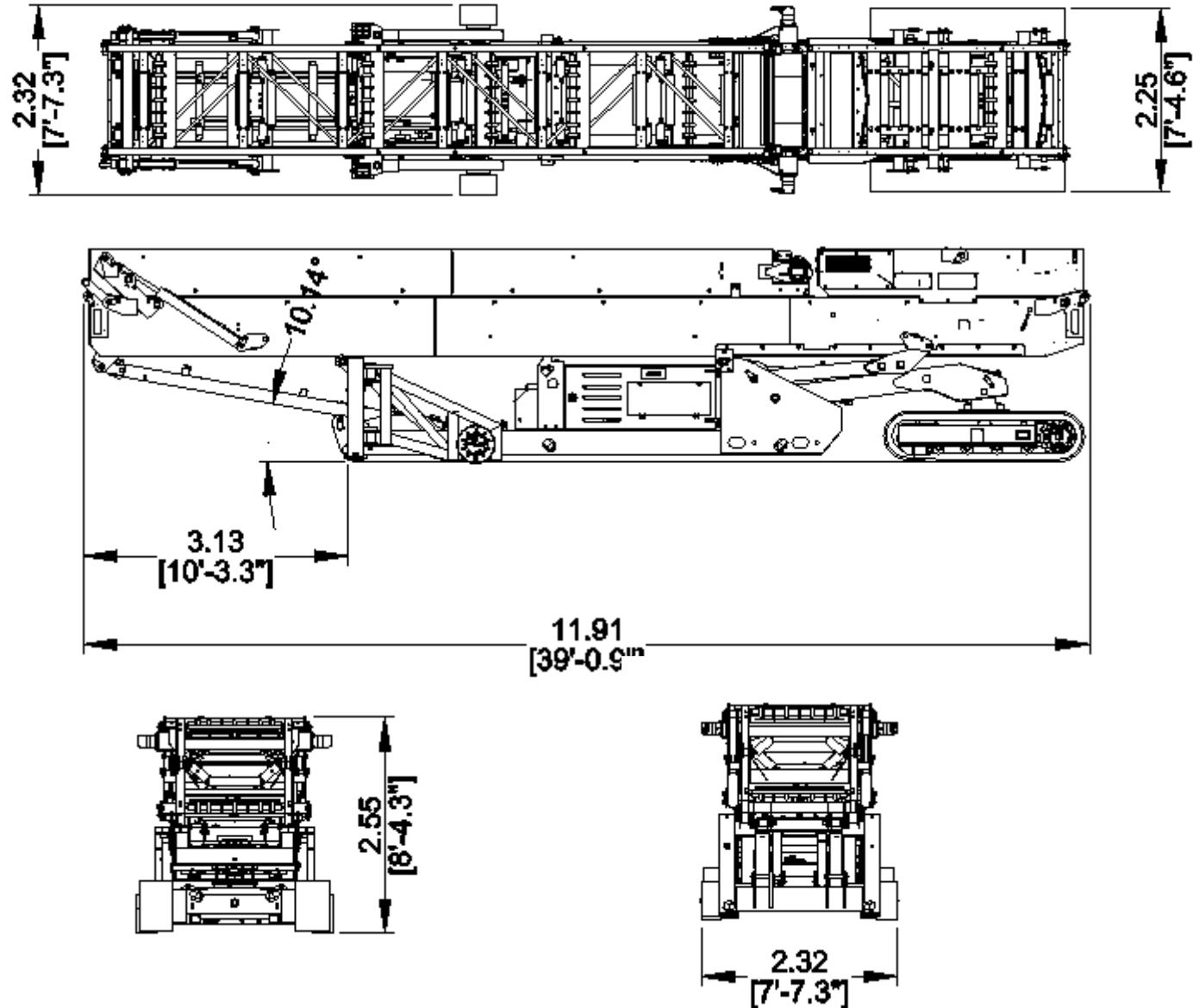


CT-75R - RADIAL CONVEYOR



↓ DIMENSIONS

Figure 4: Powerscreen CT-75R
Containerised Transport Position





Powerscreen equipment complies with CE requirements.

Please consult Powerscreen if you have any other specific requirements in respect of guarding, noise or vibration levels, dust emissions, or any other factors relevant to health and safety measures or environmental protection needs. On receipt of specific requests, we will endeavour to ascertain the need for additional equipment and, if appropriate, quote extra to contract prices.

All reasonable steps have been taken to ensure the accuracy of this publication, however due to a policy of continual product development we reserve the right to change specifications without notice.

It is the importers' responsibility to check that all equipment supplied complies with local legislation regulatory requirements.

Plant performance figures given in this brochure are for illustration purposes only and will vary depending upon various factors, including feed material gradings and characteristics. Information relating to capacity or performance contained within this publication is not intended to be, nor will be, legally binding.

GET IN TOUCH

Dungannon

200 Coalisland Road, Dungannon,
Co Tyrone, BT71 4DR, Northern Ireland
Tel: +44 (0) 28 87 718 500
Fax: +44 (0) 28 87 747 231

Louisville

11001 Electron Drive,
Louisville, Kentucky, 40299 USA
Tel: +1 502 736 5200
Fax: +1 502 736 5202

